



## Security Grilles

ALLUMINIUM ROLLING GRILLES



SPECIALIST DOOR SOLUTIONS

0800 807 753

[ultigroup.co.nz](http://ultigroup.co.nz)

## ALUMINIUM ROLLING GRILLES

Light and Heavy Duty Commercial Grade.

### 12 MM TUBE ALLUMINUM ROLLING GRILLES



BAR TOPS, COUNTER TOPS, SHOP FRONTS, AND PEDESTRIAN OPENINGS, ARCADES

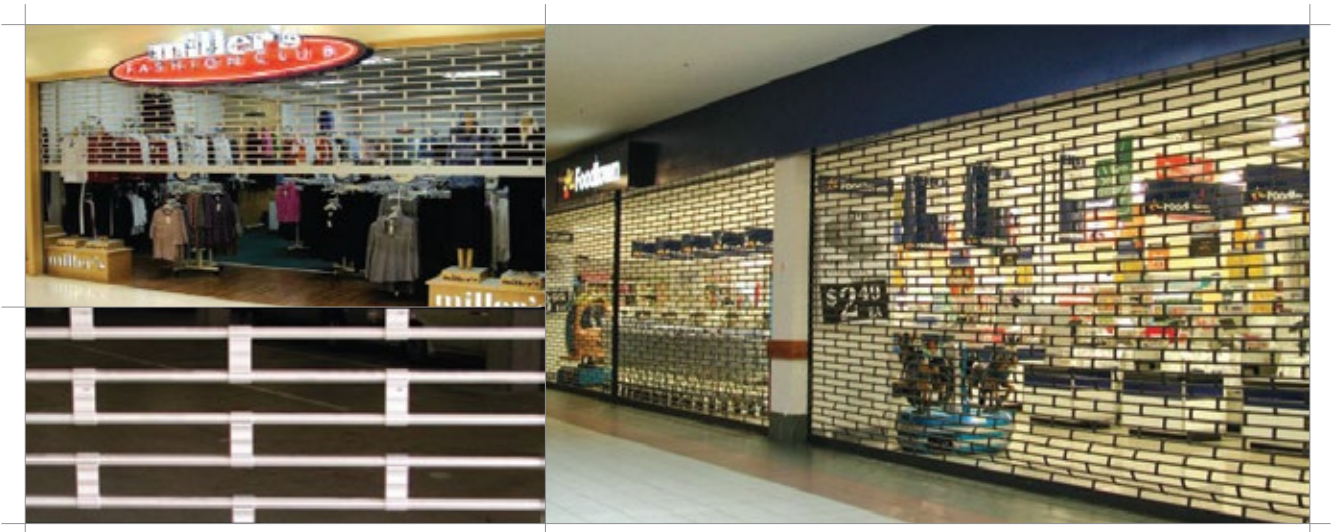
#### FEATURES

- Curtains are constructed from individual 12mm diameter aluminium tubes connected with black nylon links
- Operation by motorized gearbox drive or manual hand chain
- Fixed or removable mullions are available for over width openings
- An extensive range of powder coating colors can be offered
- Grilles are custom made to fit the size of opening and structure of building

55 YEARS OF MANUFACTURING EXPERIENCE AND CONTINUOUS REFINEMENT.



### 19 MM TUBE LIGHT COMMERCIAL GRADE



### SHOP FRONTS AND LARGE PEDESTRIAN OPENINGS

#### FEATURES

- Curtains are constructed from individual 19mm diameter aluminium tubes connected with extruded aluminium links
- Captive guide system fitted with a polypropylene pile insert to prevent metal to metal contact
- Operation by motorized gearbox drive or manual hand chain
- Fixed or removable mullions are available for over width openings
- An extensive range of powder coating colors can be offered
- Grilles are custom made to fit the size of opening and structure of building

### 19 MM TUBE HEAVY DUTY COMMERCIAL GRADE



### CAR PARKS, SHOP FRONTS, AND LARGE PEDESTRIAN OPENINGS

## CURTAIN

Assembled from 12mm aluminium tubes and molded nylon links into a brick pattern. The tubes and links can be replaced individually if damaged. Fitted to the lower edge of the curtain is an extruded aluminium bottom bar.

## GUIDES

Specially extruded aluminium channel 40mm x 30mm. Guides screwed to jambs at max. 600mm centers. Each guide is constructed with a bell mouth to facilitate smooth entry of the curtain.

## FINISH

Clear anodized or powder coated.

## BARREL

Grille barrels are fabricated from mild steel tube with a minimum diameter of 165mm and of sufficient wall thickness to ensure that nominal deflection does not exceed safe working conditions. Helically wound counterbalance springs are contained within the barrel.

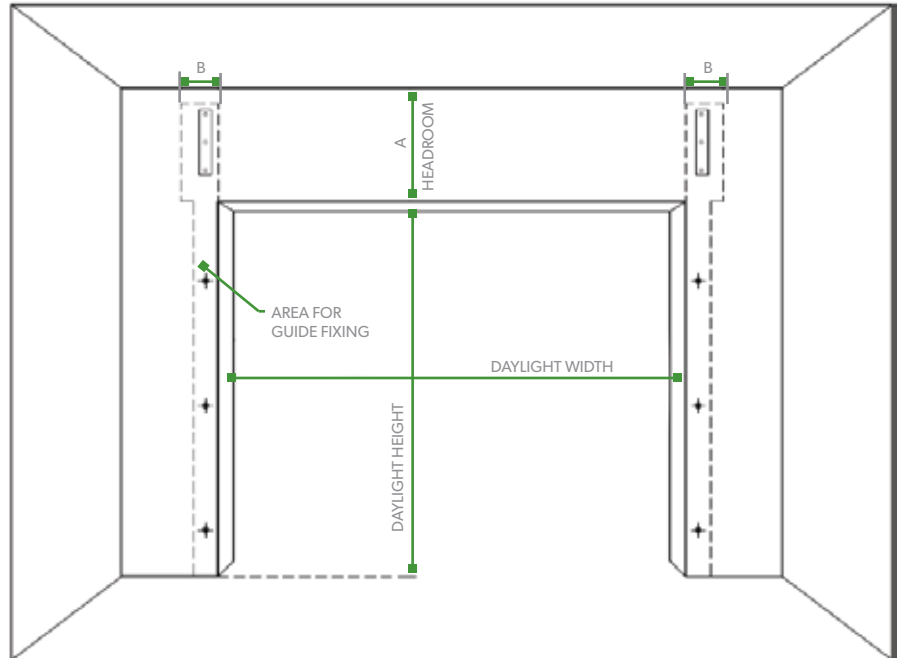
## SECURITY

Flush mounted lock with various keying options.

## OPERATION

Spring balanced or motorized. Motorized grilles have single phase motor sets with adjustable limit switches and control pendant. Operating speed is approximately 170mm per second. The motor sets incorporate an automatically engaging hand chain for use during power failures. Battery backup systems are available. Key switches and door controllers that accept signals from a range of electronic and electrical equipment are also available. Special motorizing options and barrel mounting methods are available on request.

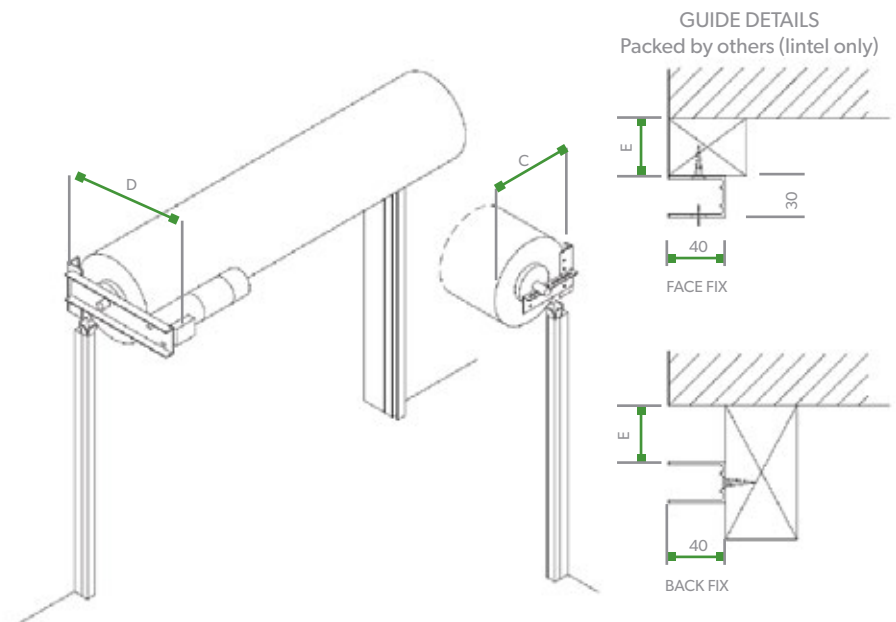
## 12 MM TUBE ALUMINIUM GRILLE TECHNICAL SPECIFICATIONS



### 12mm ALUMINIUM GRILLE CLEARANCES

HEIGHT OF OPENING (m)	HEADROOM (A)	SIDEROOM (B)	INSIDE PROJECTION BARREL (C)	INSIDE PROJECTION MOTOR (D)	GUIDE PACKER SIZE (E)
0 - 1.25	380	120	360	550	0
1.25 - 2.0	400	120	390	580	0
2.0 - 3.0	450	120	440	610	40
3.0 - 4.0	500	120	475	625	50

\* Maximum Manual Size = 3.5m High x 4m Width  
 Maximum Motorized Size = 4m High x 5.5m Width



## CURTAIN

Assembled from 12mm aluminium tubes and molded nylon links into a brick pattern. The tubes and links can be replaced individually if damaged. Fitted to the lower edge of the curtain is an extruded aluminium bottom bar.

## GUIDES

Specially extruded aluminium channel 40mm x 30mm. Guides screwed to jambs at max. 600mm centers. Each guide is constructed with a bell mouth to facilitate smooth entry of the curtain.

## FINISH

Clear anodized or powder coated.

## BARREL

Grille barrels are fabricated from mild steel tube with a minimum diameter of 165mm and of sufficient wall thickness to ensure that nominal deflection does not exceed safe working conditions. Helically wound counterbalance springs are contained within the barrel.

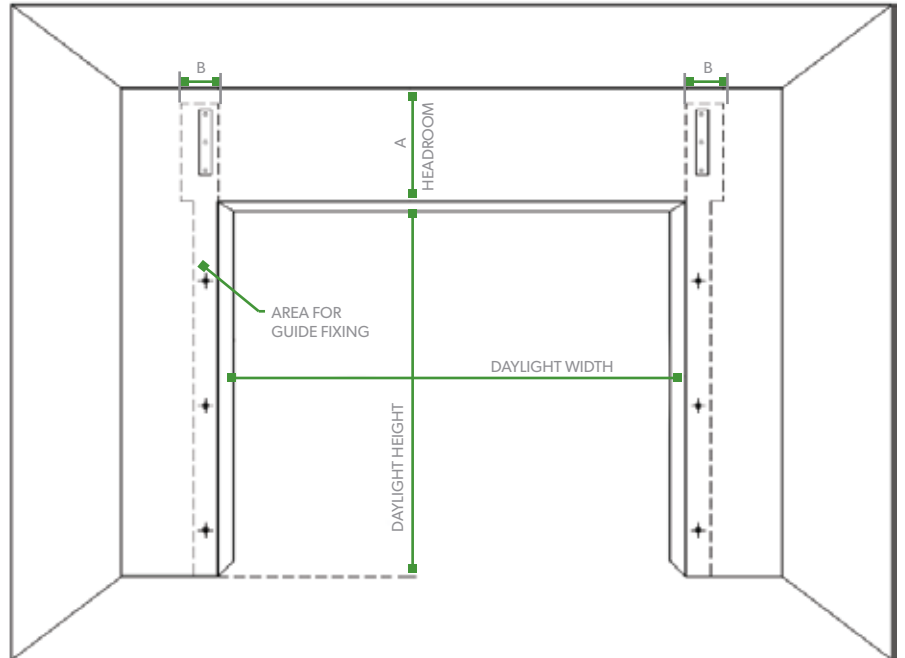
## SECURITY

Flush mounted lock with various keying options.

## OPERATION

Spring balanced or motorized. Motorized grilles have single phase motor sets with adjustable limit switches and control pendant. Operating speed is approximately 170mm per second. The motor sets incorporate an automatically engaging hand chain for use during power failures. Battery backup systems are available. Key switches and door controllers that accept signals from a range of electronic and electrical equipment are also available. Special motorizing options and barrel mounting methods are available on request.

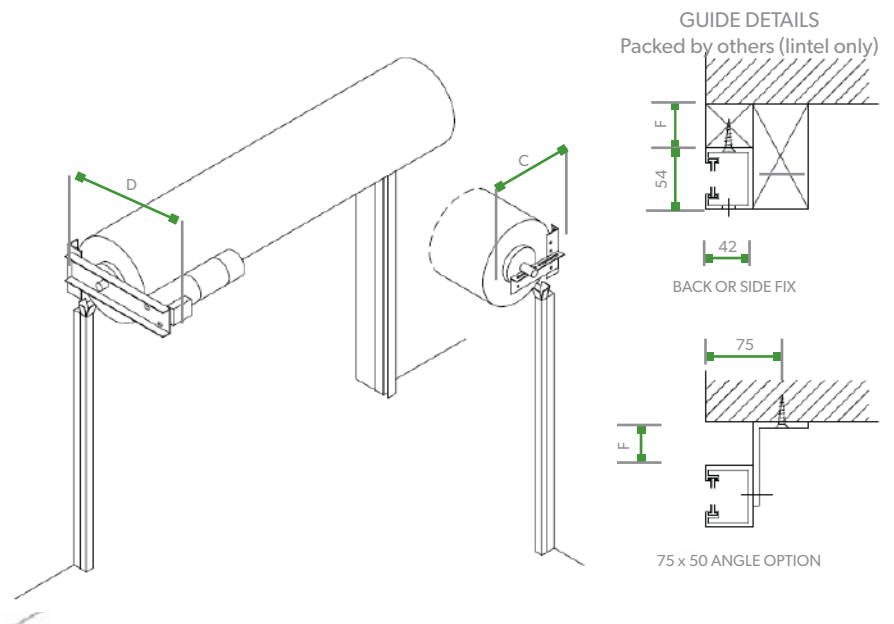
## 19 MM TUBE ALUMINIUM GRILLE TECHNICAL SPECIFICATIONS



## 19mm ALUMINIUM GRILLE CLEARANCES

HEIGHT OF OPENING (m)	HEADROOM A	SIDEROOM B	INSIDE PROJECTION BARREL C	INSIDE PROJECTION MOTOR D	GUIDE PACKER SIZE E
0 - 2.0	420	120	390	550	0
2.0 - 3.0	450	120	440	580	40
3.0 - 4.0	500	120	480	595	50
4.0 - 5.0	550	120	520	610	50

\* Maximum Manual Size = 3.5m High x 4m Width  
 Maximum Motorized Size = 4m High x 5.5m Width



## CURTAIN

Assembled from 19mm Aluminium Tubes at a nominal vertical pitch of 75mm joined by 35mm wide extruded aluminium links spaced at 500mm. Every 6th rod has a retaining plug secured to each end to retain the curtain within the guide section. The tubes and links can be replaced individually if damaged. Fitted to the lower edge of the curtain is an 100x25mm extruded aluminium box section bottom bar. To enhance security the curtains are provided with Lifting Deterrent Mechanism.

## CAPTIVE GUIDES

Constructed from extruded aluminium with a retaining nib and fitted with a continuous silicon treated polypropylene pile insert to prevent metal to metal contact.

## FINISH

Clear anodized or powder coated.

## BARREL

Grille barrels are fabricated from mild steel tube with a minimum diameter of 165mm and of sufficient wall thickness to ensure that nominal deflection does not exceed safe working conditions. Helically wound counterbalance springs are contained within the barrel.

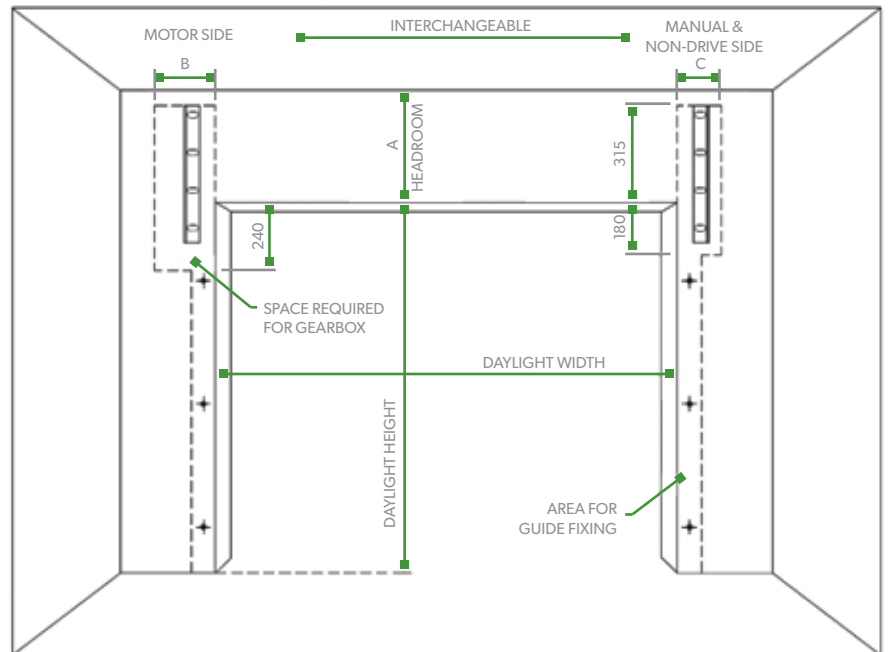
## ELECTRICAL OPERATION

The compact motorising units are powered by a 3 phase 0.37kW electric motor, driving an enclosed worm gearbox with chain reduction to the shutter barrel. Assemblies are supplied complete with reversing starter and limit switches. Operating speed is approximately 200mm per second. Single phase or manual operation can be specified.

## HIGH CYCLE OPERATION

Designed for use in car parks the grilles are supplied with a 3 phase brake motor and TER limit switch, nylon bushes on the end of each tube, steel bellmouth support and steel pipe barrel. Door controllers that accept signals from a range of electronic and electrical equipment are also available. Special motorising options and barrel mounting methods are available on request.

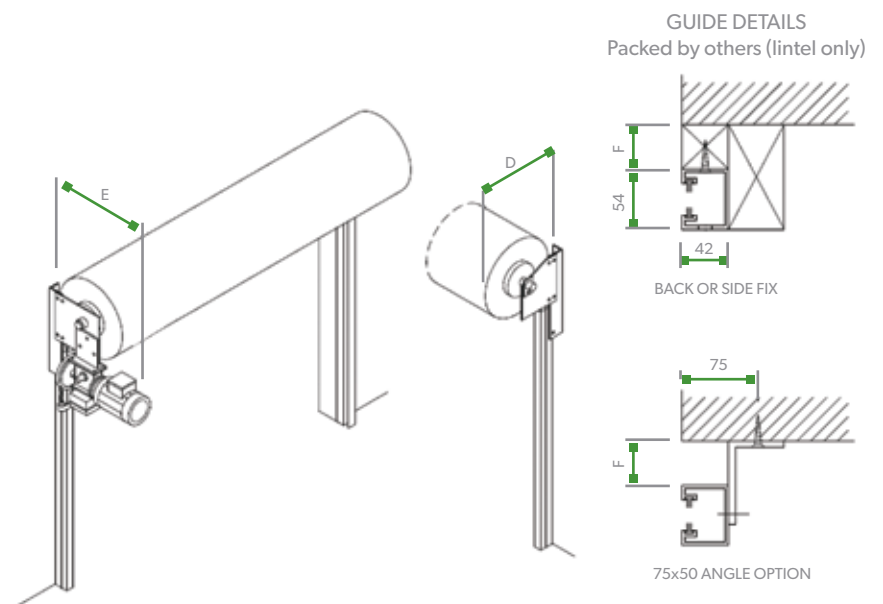
## 19 MM TUBE ALUMINIUM GRILLE TECHNICAL SPECIFICATIONS



## 19mm ALUMINIUM GRILLE CLEARANCES

HEIGHT OF OPENING (m)	HEADROOM (A)	SIDEROOM Motor Side (B)	SIDEROOM Non-drive & manual (C)	INSIDE PROJECTION BARREL (C)	INSIDE PROJECTION MOTOR (D)	GUIDE PACKER SIZE (F)
0 - 2.0	420	215	145	400	550	9
2.0 - 3.0	450	215	145	420	580	40
3.0 - 4.0	500	215	145	440	600	50
4.0 - 5.0	550	215	145	470	600	50

\* Additional projection may be required with a non-standard motor.  
 Openings up to 30m are possible.









[www.ultigroup.co.nz](http://www.ultigroup.co.nz)



SPECIALIST  
**ACCESSWAY**  
SOLUTIONS



0800 807 753 | +64 9 407 9619 | [sales@ultigroup.co.nz](mailto:sales@ultigroup.co.nz)

Northland, Auckland, Waikato, Bay of Plenty, Taranaki, Manawatu, Wellington, Marlborough, Nelson, Christchurch